

PREPARATION

< PREPARATION >

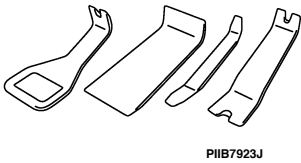
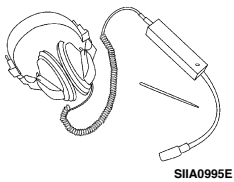
PREPARATION

PREPARATION

Commercial Service Tools

INF0ID:0000000010350933

Tool name	Description
Engine ear	Location the noise
Remover tool	Remove the clips, pawls and metal clips



CLIP LIST

< PREPARATION >

CLIP LIST

Clip List

INFOID:0000000010350934

Shapes	Removal & Installation		Shapes	Removal & Installation	
	Removal: Remove by bending up with flat-bladed screwdrivers or clip remover.			Removal: Finisher Clip A Flat-bladed screwdriver Clip B	
	Removal: Remove with a clip remover.			Removal: Flat-bladed screwdriver Finisher Body panel Clip A Clip B (Grommet)	
	Removal: Push center pin to catching position. (Do not remove center pin by hitting it.)	Installation: Push		Removal: Holder portion of clip must be spread out to remove rod.	
	Removal: Remove by bending up with flat-bladed screwdrivers or clip remover.			Removal: 1. Screw out with a Phillips screwdriver. 2. Remove female portion with flat-bladed screwdriver.	
	Removal: 			Removal: Rotate 45° to remove.	Installation:
	Removal: 			Removal: 	

JMJIA3734GB

A

B

C

D

E

F

G

H

I

INT

K

L

M

N

O

P

DOOR FINISHER

< REMOVAL AND INSTALLATION >

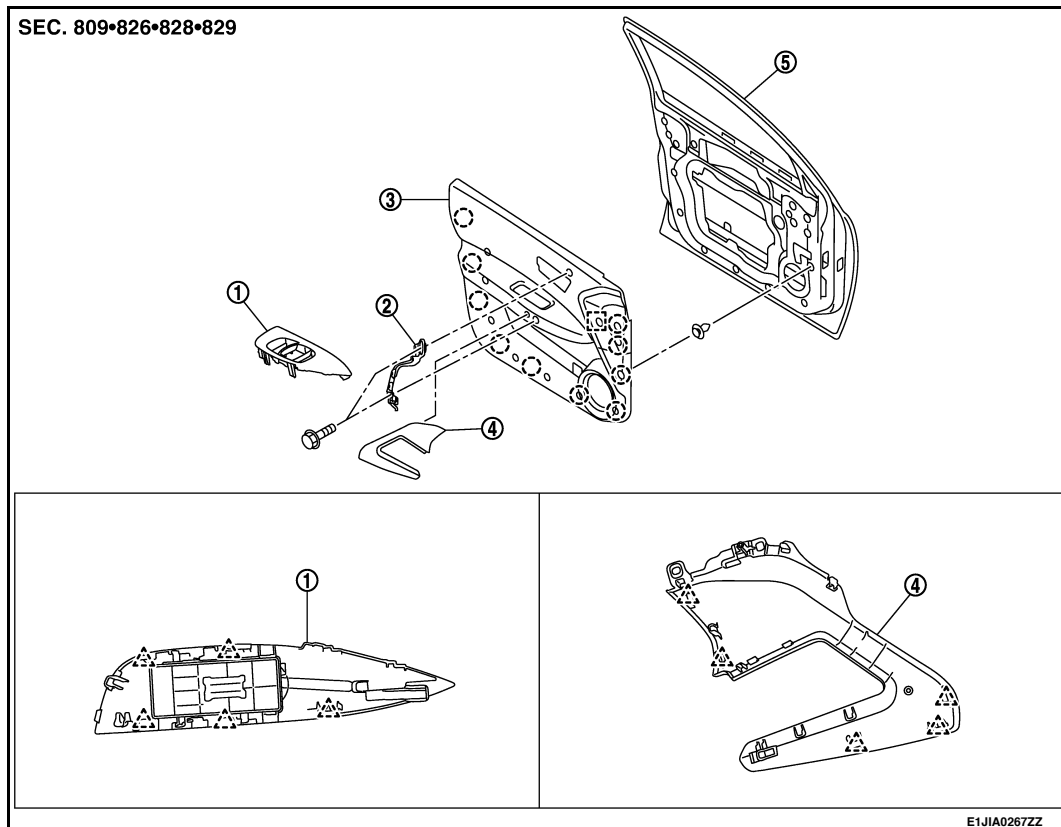
REMOVAL AND INSTALLATION

DOOR FINISHER

FRONT DOOR FINISHER

FRONT DOOR FINISHER : Exploded View

INFOID:0000000010350935



- | | | |
|--|-----------------------|-----------------------------|
| 1. Power window switch front (driver side) | 2. Front door bracket | 3. Front door finisher (LH) |
| 4. Front door grip (LH) | 5. Front door panel | |

○ : Clip

△ : Pawl

□ : Metal clip

FRONT DOOR FINISHER : Removal and Installation

INFOID:0000000010350936


REMOVAL

1. Fully open door window.

DOOR FINISHER

< REMOVAL AND INSTALLATION >

2. Insert remover tool (A) to release inside handle finisher.

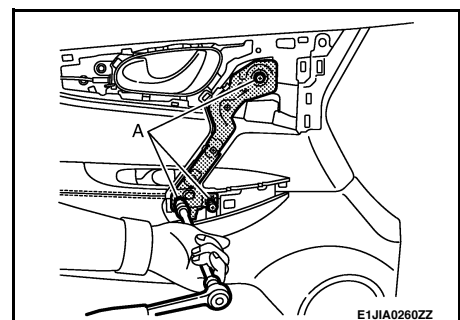
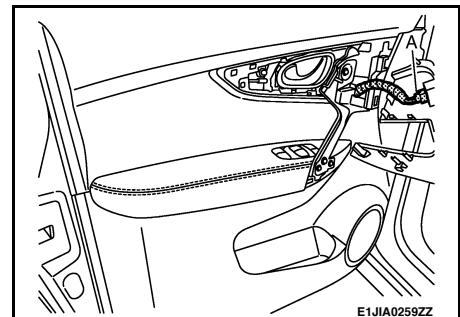
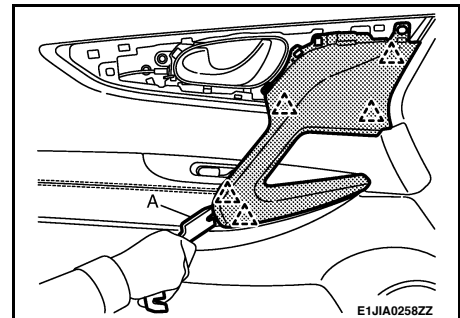
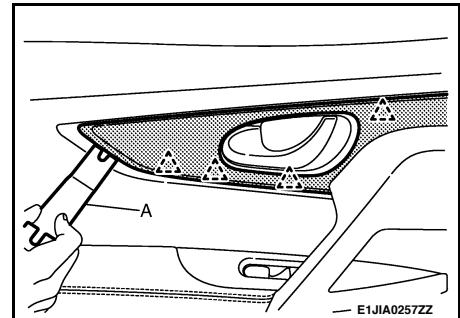
 : Pawl

3. Remove handle finisher.

4. Insert remover tool (A) to release front door grip.

5. Disconnect harness connector (A).

6. Remove front door grip.
7. Remove screws (A) holding front door bracket in place using screw-driver.



A

B

C

D

E

F

G

H

I

INT

K

L

M

N

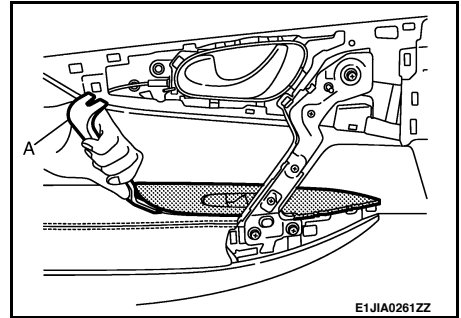
O

P

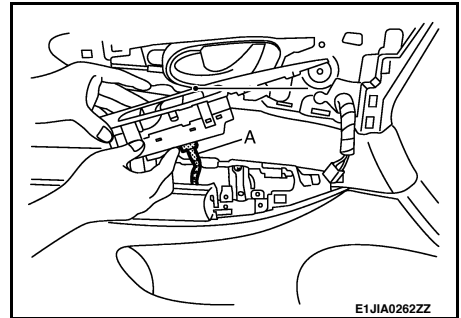
DOOR FINISHER

< REMOVAL AND INSTALLATION >

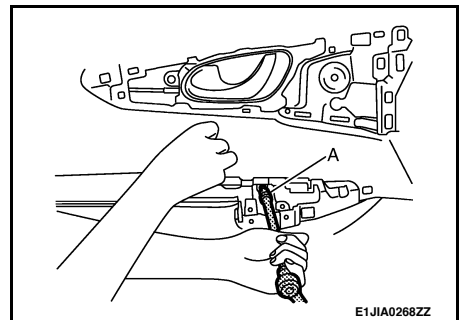
8. Insert remover tool (A) to release power window switch.



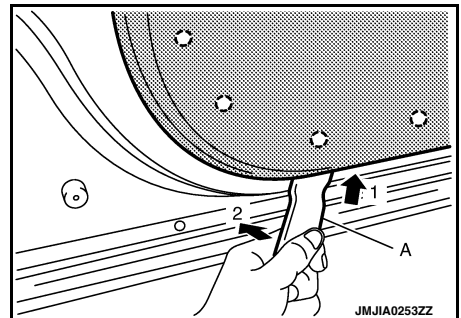
9. Disconnect harness connectors (A) for power window switch front.




10. Remove mounting screw (A).



11. Insert remover tool (A) between door finisher and door panel to disengage door finisher mounting clips, starting from the bottom and working to the top.



 : Clip

INSTALLATION

Install in the reverse order of removal.

CAUTION:

When installing door finisher, check that clips are securely fitted in panel holes on body, and then press them in.

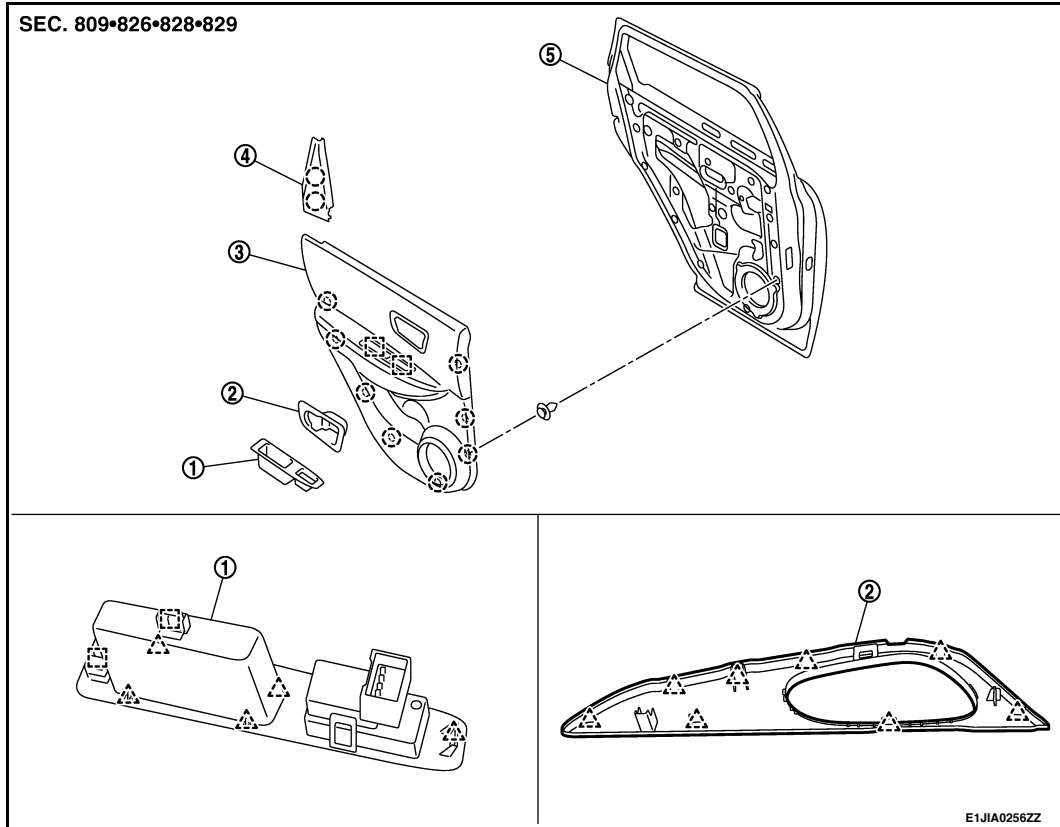
REAR DOOR FINISHER

DOOR FINISHER

< REMOVAL AND INSTALLATION >

REAR DOOR FINISHER : Exploded View

INFOID:0000000010350937



- | | | |
|----------------------------------|-------------------------------------|----------------------------|
| 1. Power window switch rear (LH) | 2. Inside handle finisher (rear LH) | 3. Rear door finisher (LH) |
| 4. Cover rear door inner (LH) | 5. Rear door panel | |

○ : Clip

△ : Pawl

□ : Metal clip

REAR DOOR FINISHER : Removal and Installation

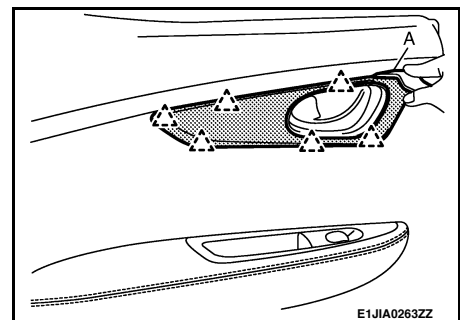
INFOID:0000000010350938

REMOVAL

1. Fully open door window.
2. Insert remover tool (A) to disengage the escutcheon retaining pawls to door finisher.

△ : Pawl

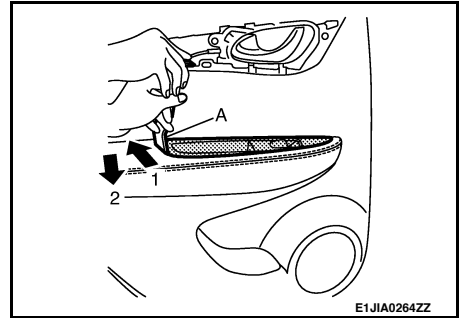
3. Remove inside handle finisher.



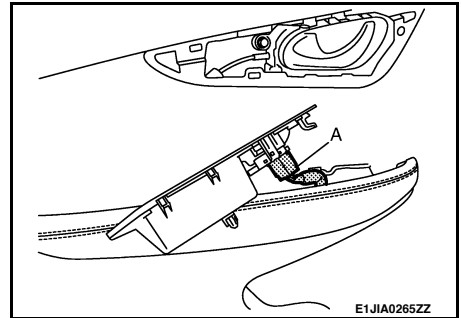
DOOR FINISHER

< REMOVAL AND INSTALLATION >

4. Insert remover tool (A) to disengage power window switch.

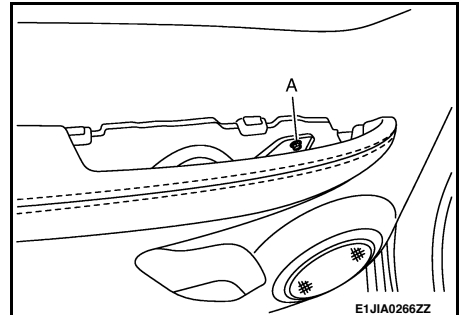


5. Disconnect harness connectors (A) for power window switch.

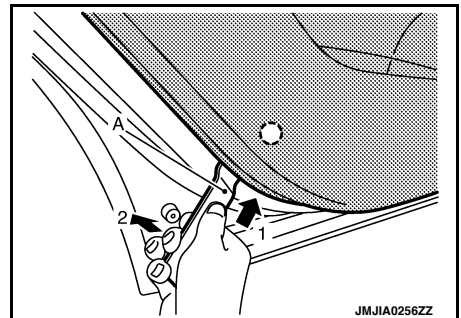


6. Remove power window switch.

7. Remove bolt (A).



8. Insert remover tool (A) between door finisher and door panel to disengage door finisher mounting clips, starting from the bottom and working to the top.



9. Remove rear door finisher.

10. Remove the following parts after removing door finisher.

- Power window switch rear. Refer to [INT-15, "REAR DOOR FINISHER : Removal and Installation"](#).
- Seal assembly rear door inside.
- Cover rear door inner.

INSTALLATION

Install in the reverse order of removal.

CAUTION:

DOOR FINISHER

< REMOVAL AND INSTALLATION >

When installing door finisher, check that clips are securely fitted in panel holes on body, and then press them in.

A

B

C

D

E

F

G

H

I

INT

K

L

M

N

O

P