

FRONT FOG LAMP AIMING ADJUSTMENT

< PERIODIC MAINTENANCE >

[LED HEADLAMP]

FRONT FOG LAMP AIMING ADJUSTMENT

Description

INFOID:000000010338848

PREPARATION BEFORE ADJUSTING

NOTE:

For details, refer to the regulations in your own country.

Before performing aiming adjustment, check the following.

- Adjust the tire pressure to the specification.
- Fill with fuel, engine coolant and each oil.
- Maintain the unloaded vehicle condition. (Remove luggage from the passenger compartment and the luggage room.)

NOTE:

Never remove the temporary tire, jack and on-vehicle tool.

- Wipe out dirt on the headlamp.

CAUTION:

Never use organic solvent (thinner, gasoline etc.).

- Ride alone on the driver seat.

AIMING ADJUSTMENT SCREW

- Turn the aiming adjusting screw for adjustment.

Ⓐ: DOWN

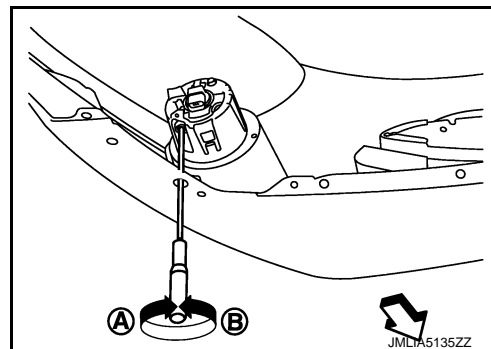
Ⓑ: UP

- For the position and direction of the adjusting screw, refer to the figure.

NOTE:

A screwdriver or hexagonal wrench [6 mm (0.24 in)] can be used for adjustment.

⇐ : Vehicle front



Aiming Adjustment Procedure

INFOID:000000010338849

1. Place the screen.

NOTE:

- Stop the vehicle facing the wall.
- Place the board on a plain road vertically.

2. Face the vehicle with the screen. Maintain 10 m (32.8 ft) between the front fog lamp center and the screen.

3. Start the engine. Turn the front fog lamp ON.

NOTE:

Shut off the headlamp light with the board to prevent from illuminating the adjustment screen.

CAUTION:

Never cover the lens surface with a tape etc. The lens is made of resin.

4. Adjust the cutoff line height Ⓐ with the aiming adjustment screw so that the distance (X) between the horizontal center line of front fog lamp (H) and Ⓐ becomes 150 mm (5.90 in).

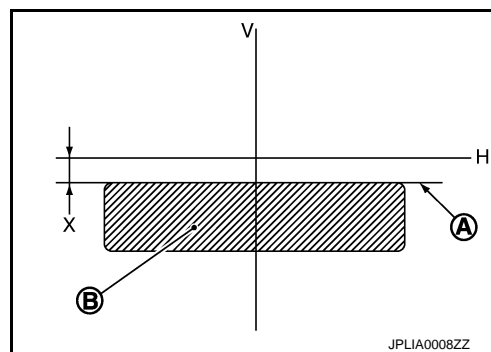
FRONT FOG LAMP AIMING ADJUSTMENT

< PERIODIC MAINTENANCE >

[LED HEADLAMP]

Front fog lamp light distribution on the screen

- Ⓐ : Cutoff line
- Ⓑ : High illuminance area
- H : Horizontal center line of front fog lamp
- V : Vertical center line of front fog lamp
- X : Cutoff line height



A
B
C
D
E
F
G
H
I
J
K
EXL
M
N
O
P

FRONT COMBINATION LAMP

< REMOVAL AND INSTALLATION >

[LED HEADLAMP]

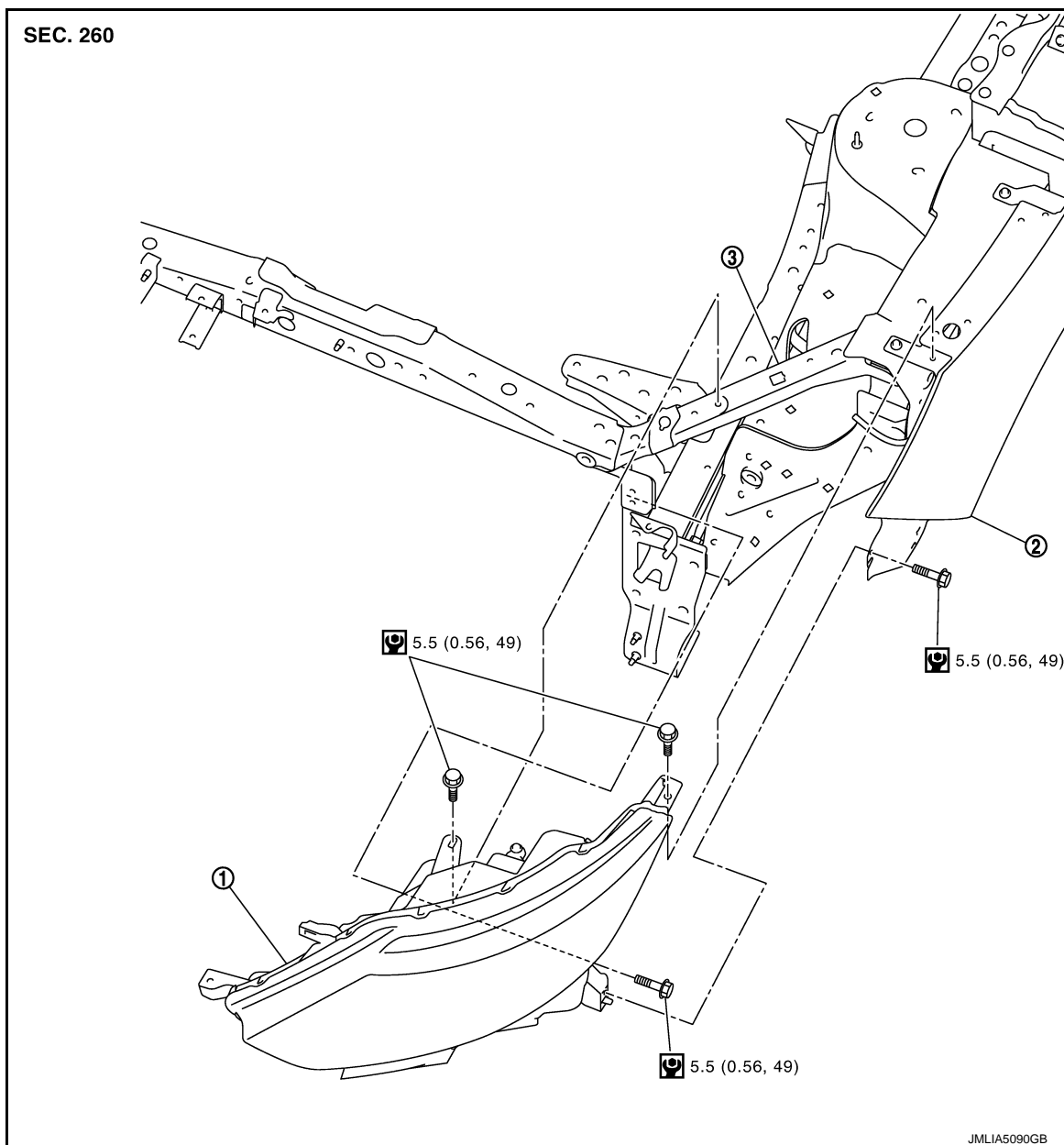
REMOVAL AND INSTALLATION

FRONT COMBINATION LAMP

Exploded View

INFOID:0000000010338850


REMOVAL



① Front combination lamp

② Front fender panel

③ Radiator core support upper LH

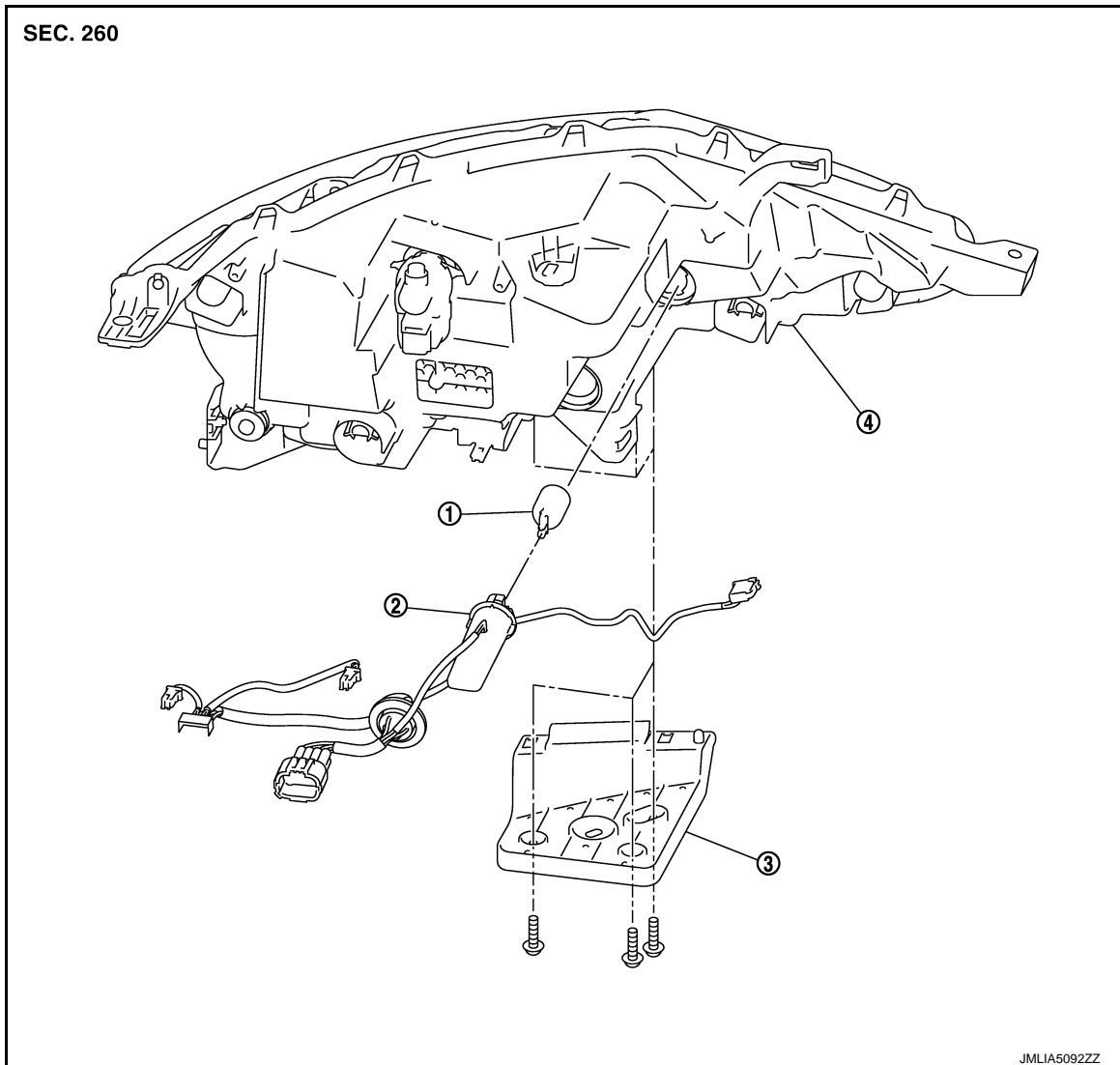
 : N·m (kg-m, in-lb)

DISASSEMBLY

FRONT COMBINATION LAMP

< REMOVAL AND INSTALLATION >

[LED HEADLAMP]



- ① Front turn signal lamp bulb ② Front turn signal lamp bulb socket ③ Front combination lamp bracket
④ Front combination lamp housing

EXL

Removal and Installation

INFOID:0000000010338851

CAUTION:

Disconnect the battery negative terminal or remove power circuit fuse when performing the operation for preventing electric leakage. Refer to [EXL-8, "Precautions for Removing Battery Terminal"](#).

REMOVAL

1. Remove front bumper fascia. Refer to [EXT-19, "Removal and Installation"](#).
2. Remove front combination lamp assembly mounting bolts.
3. Pull out front combination lamp assembly forward the vehicle.
4. Disconnect front combination lamp assembly harness connectors.
5. Remove front combination lamp assembly.

INSTALLATION

Note the following item, and then install in the reverse order of removal.

CAUTION:

After installation, perform aiming adjustment. Refer to the following:

- LHD MODELS: Refer to [EXL-153, "LHD : Description"](#).

FRONT COMBINATION LAMP

[LED HEADLAMP]

< REMOVAL AND INSTALLATION >

- RHD MODELS: Refer to [EXL-155, "RHD : Description"](#).

Replacement

INFOID:000000010431361

CAUTION:

- Disconnect the battery negative terminal or remove power circuit fuse when performing the operation for preventing electric leakage. Refer to [EXL-8, "Precautions for Removing Battery Terminal"](#).
- After installing the bulb, install the bulb socket securely for watertightness.
- Never touch the glass of bulb directly by hand. Keep grease and other oily matters away from it.
- Never touch bulb by hand while it is lit or right after being turned OFF.
- Never leave bulb out of lamp reflector for a long time because dust, moisture smoke, etc. may affect the performance of lamp. When replacing bulb, be sure to replace it with new one.

HEADLAMP BULB (HI)

CAUTION:

Replacement of a single part is not possible due to the adoption of LED bulb. for replacement, replace front combination lamp as a set.

HEADLAMP BULB (LO)

CAUTION:

Replacement of a single part is not possible due to the adoption of LED bulb. for replacement, replace front combination lamp as a set.

DAYTIME RUNNING LIGHT/ PARKING LAMP BULB

CAUTION:

Replacement of a single part is not possible due to the adoption of LED bulb. for replacement, replace front combination lamp as a set.

FRONT TURN SIGNAL LAMP BULB

LH side

1. Remove air duct. Refer to the following.
 - HRA2DDT: Refer to [EM-23, "Removal and Installation"](#).
 - MR20DD: Refer to [EM-147, "Removal and Installation"](#).
 - K9K: Refer to [EM-279, "Removal and Installation"](#).
 - R9M: Refer to [EM-380, "Removal and Installation"](#).
2. Rotate front turn signal lamp bulb socket counterclockwise and unlock it.
3. Remove front turn signal lamp bulb socket from front combination lamp housing.
4. Remove front turn signal lamp bulb from turn signal lamp bulb socket.

RH side

1. Rotate front turn signal lamp bulb socket counterclockwise and unlock it.
2. Remove front turn signal lamp bulb socket from front combination lamp housing.
3. Remove front turn signal lamp bulb from turn signal lamp bulb socket.

Disassembly and Assembly

INFOID:000000010338853

DISASSEMBLY

1. Remove front combination lamp bracket mounting screws, and then remove front combination lamp bracket from front combination lamp housing.
2. Disconnect front combination lamp harness connectors.
3. Rotate front turn signal lamp bulb socket counterclockwise and unlock it.
4. Remove front turn signal lamp bulb socket from front combination lamp housing.
5. Remove front turn signal lamp bulb from front turn signal lamp bulb socket.

ASSEMBLY

Note the following item, and then install in the reverse order of removal.

CAUTION:

- After installing the bulb, install the bulb socket securely watertightness.
- After installation, perform aiming adjustment. Refer to following.
- LHD models: Refer to [EXL-154, "LHD : Aiming Adjustment Procedure"](#).

FRONT COMBINATION LAMP

< REMOVAL AND INSTALLATION >

[LED HEADLAMP]

- RHD models: Refer to [EXL-156, "RHD : Aiming Adjustment Procedure"](#).

A

B

C

D

E

F

G

H

I

J

K

EXL

M

N

O

P

FRONT FOG LAMP

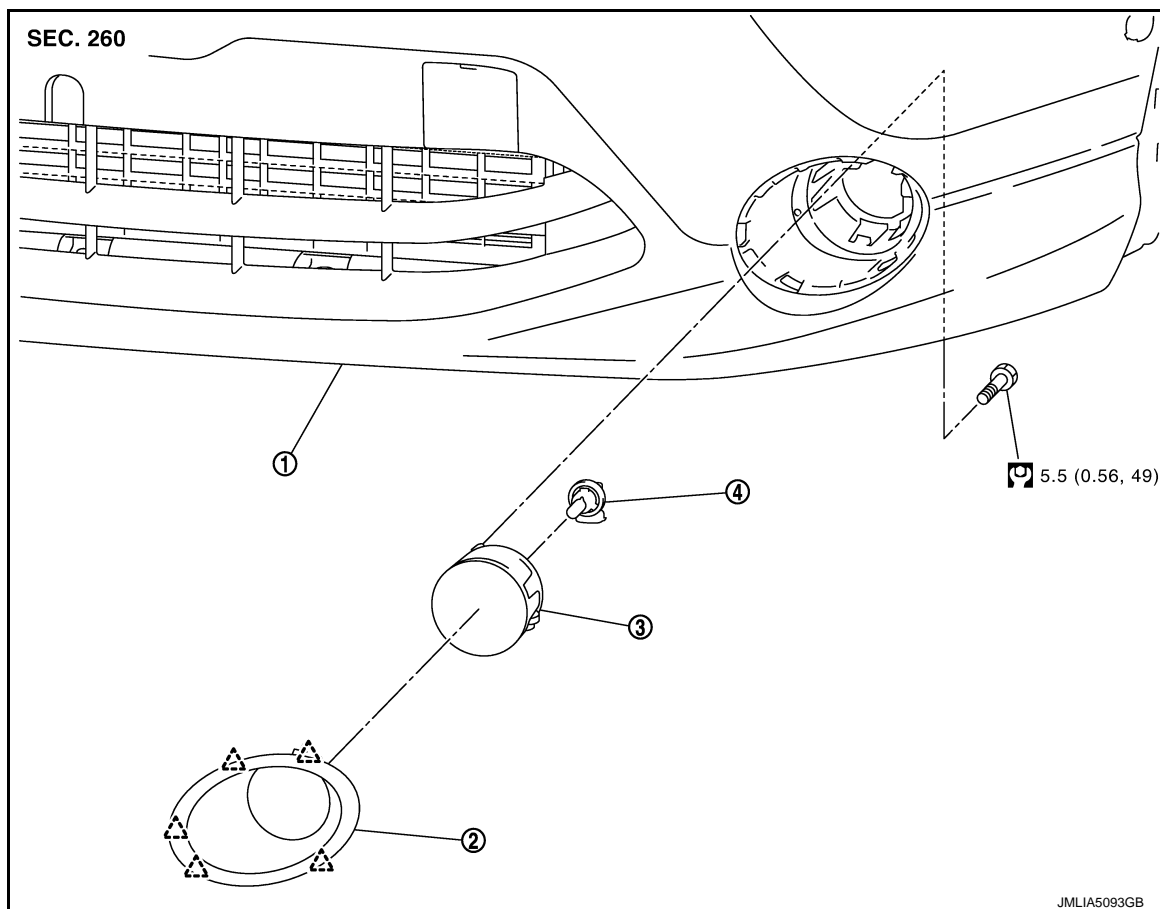
< REMOVAL AND INSTALLATION >

[LED HEADLAMP]

FRONT FOG LAMP

Exploded View

INFOID:0000000010338858



① Front bumper fascia

② Front bumper finisher

Front fog lamp

④ Front fog lamp bulb

: N·m (kg-m, in-lb)

Removal and Installation

INFOID:0000000010338859

CAUTION:

Disconnect the battery negative terminal or remove power circuit fuse when performing the operation for preventing electric leakage. Refer to [EXL-8, "Precautions for Removing Battery Terminal"](#).

REMOVAL

1. Remove front fender protector to make work space. Refer to [EXT-32, "Removal and Installation"](#).
2. Disconnect front fog lamp harness connector.
3. Remove front fog lamp fixing bolt, and then remove front fog lamp.

INSTALLATION

Note the following item, and then install in the reverse order of removal.

NOTE:

After installation, perform aiming adjustment. Refer to [EXL-158, "Aiming Adjustment Procedure"](#)

Replacement

INFOID:0000000010338860

CAUTION:

FRONT FOG LAMP

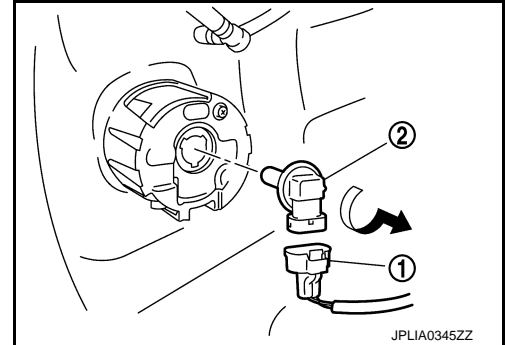
< REMOVAL AND INSTALLATION >

[LED HEADLAMP]

- Disconnect the battery negative terminal or remove power circuit fuse when performing the operation for preventing electric leakage. Refer to [EXL-8, "Precautions for Removing Battery Terminal"](#).
- Never touch the glass of bulb directly by hand. Keep grease and other oily matters away from it.
- Never touch bulb by hand while it is lit or right after being turned OFF.
- Never leave bulb out of lamp reflector for a long time because dust, moisture smoke, etc. may affect the performance of lamp. When replacing bulb, be sure to replace it with new one.

FRONT FOG LAMP BULB

1. Remove fender protector to make work space. Refer to [EXT-32, "Removal and Installation"](#).
2. Disconnect front fog lamp harness connector ①.
3. Rotate front fog lamp bulb ② counterclockwise and unlock it.



A
B
C
D
E
F
G
H
I
J
K
EXL
M
N
O
P